

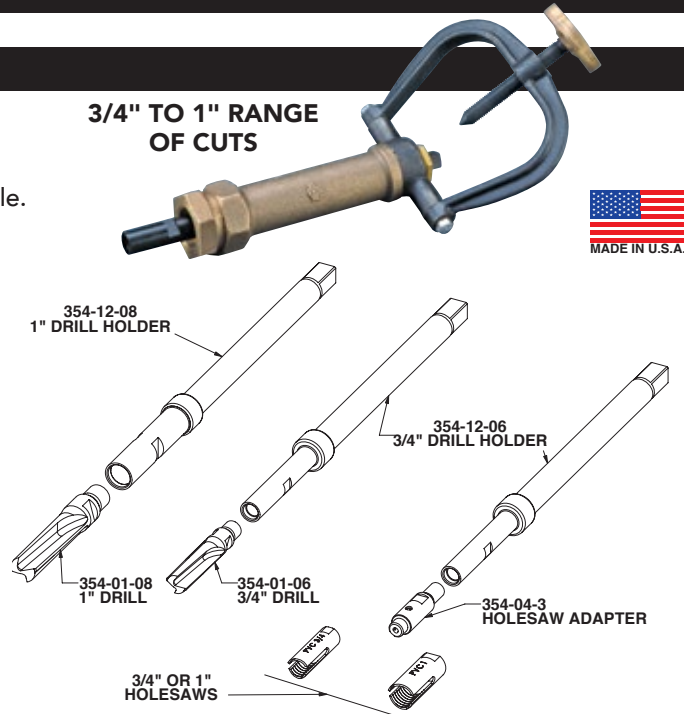


# 5930™ PIPE DRILLING MACHINE

## MATERIAL SPECIFICATIONS

- Weighs approximately 20 lbs.
- Compact and easy to handle.
- 3/4" to 1" range of cuts using a corporation stop and saddle.
- Cuts all types of water mains, wet and dry.
- Easy to set up and use.

3/4" TO 1" RANGE OF CUTS



- TO ORDER:**
1. Order Base Machine.
  2. Order Drill Holder per drill size.
  3. Order Drills or Holesaw Adapter and Holesaws. Holesaw adapter is required for PVC taps.
  4. Order Corp Stop Adapters per Corp size and thread type.

ITEM NUMBER	DESCRIPTION	LIST PRICE
<b>354-00</b>	<b>5930 Drilling Machine</b>	<b>\$2,665.13</b>
354-60-4	Included with 5930 Machine: Crescent Wrench (2)	included
354-60-1	Ratchet Wrench	included
352-61	Tool Box	included
353-10-1	Tapping Compound	included
<b>DRILL HOLDERS &amp; HOLESAW ADAPTERS</b>		
Individual Holder required for each size drill		
354-12-08	1" Drill Holder: 5934	576.26
354-12-06	3/4" Drill Holder: 5934	576.26
<i>(Required if using Holesaws and for all PVC taps)</i>		
354-04-3	3/4" & 1" Holesaw Adapter: 9456	383.90
<i>354-01-02 included: For PVC pipes use Holesaw Adapter</i>		
<i>without Pilot Drill.</i>		
354-01-02	3/16" Pilot Drill: 9445	24.01
<i>Not for use when tapping PVC</i>		
<b>DRILLS &amp; HOLESAWS</b>		
<b>For Ductile, Cast Iron &amp; A/C</b>		
354-01-06	3/4" Drill: 5933 (actual O.D. 1 1/16")	292.36
354-01-08	1" Drill: 5933 (actual O.D. 1 5/16")	410.52
351-01-106	3/4" Carbide Cutter (actual O.D. 1 1/16")	210.31
351-01-108	1" Carbide Cutter (actual O.D. 7/8")	237.06
351-01-406	3/4" HSS Carbide Tip Holesaw (actual O.D. 1 1/16")	73.81
351-01-408	1" HSS Carbide Tip Holesaw (actual O.D. 7/8")	86.81
351-01-506	3/4" Bimetal Holesaw * (actual O.D. 1 1/16")	41.53
351-01-508	1" Bimetal Holesaw * (actual O.D. 7/8")	46.99
* Recommended for Steel Pipe.		
<b>FOR PVC ONLY</b>		
351-01-206	3/4" PVC Cutter (actual O.D. 1 1/16")	218.78
351-01-208	1" PVC Cutter (actual O.D. 7/8")	223.73

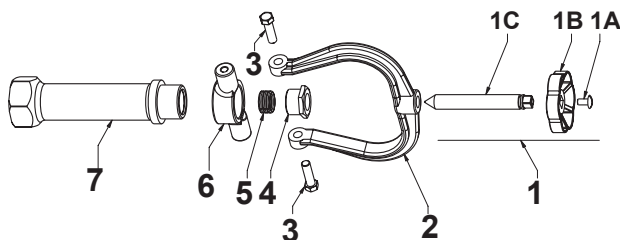
ITEM NUMBER	DESCRIPTION	LIST PRICE
<b>CORP STOP ADAPTERS</b>		
354-05-406	3/4" Female Iron Pipe Adapter: 5931-2	\$360.17
354-05-408	1" Female Iron Pipe Adapter: 5931-2	374.56
354-05-410	1 1/4" Female Iron Pipe Adapter: 5931-2 <sup>1</sup>	388.94
354-05-506	3/4" Coarse Thread Compression Adapter: 5931	360.17
354-05-508	1" Coarse Thread Compression Adapter: 5931	374.56
354-05-510	1 1/4" Coarse Thread Compression Adapter: 5931 <sup>1</sup>	388.94
354-05-606	3/4" Male Iron Pipe Adapter: 5932	388.94
354-05-608	1" Male Iron Pipe Adapter: 5932	374.56
354-05-610	1 1/4" Male Iron Pipe Adapter: 5932 <sup>1</sup>	388.94
354-05-706	3/4" Fine Thread Compression	360.17
354-05-708	1" Fine Thread Compression	374.56

Special adapters can be made upon request

\* Corp. Stop Adapter Cross Reference at [www.romac.com/tapmate-too](http://www.romac.com/tapmate-too)  
<sup>1</sup> For use on 1" Corporations with 1-1/4" outlet threads.

### 5930 PARTS

#### INCLUDED WITH 5930 DRILLING MACHINE



REF. NO.	DESCRIPTION	ITEM NUMBER	LIST PRICE
<b>1</b>	Feed Screw complete	354-43	\$407.99
<b>1A</b>	Feed Screw Bolt	354-43-51	2.36
<b>1B</b>	Wheel Feed Screw	354-43-1	44.42
<b>1C</b>	Feed Screw Only	354-43-0	371.56
<b>2</b>	Feed Yoke	354-28	293.89
<b>3</b>	Yoke Bolt (2 required)	354-28-511	POA
<b>4</b>	Gland Nut	354-39	130.84
<b>5</b>	Gland Packing Seal (3 required)	353-26-573	ea. 15.75
<b>6</b>	Top Yoke	354-28-1	282.38
<b>7</b>	Body	354-25	654.73
<i>Not illustrated:</i>			
	6" Crescent Wrench (2 required)	354-60-4	ea. 96.20
	Tool Box	352-61	POA
	Ratchet Wrench	354-60-1	637.13