



# STYLE 416 BELL JOINT LEAK CLAMPS

REPAIR CLAMPS

## MATERIAL SPECIFICATIONS

**BELL AND SPIGOT RING:** Mild steel per ASTM A 36 or equal.

**GASKET:** Compounded for water and sewer service. Meets the requirements of AWWA C219 and ASTM D2000. Other compounds available on request.

**BOLTS AND NUTS:** Trackhead bolts, heavy hex nuts, UNC 5/8" rolled thread, high strength low alloy, corrosion resistant steel per AWWA C111. Other materials or special coatings available upon request.

**COATINGS:** Shop coat applied to cast parts for corrosion protection in transit. Other coatings available upon request.

**USES:** Romac's 416 Bell Joint Leak Clamps provide fast, economical means of repairing or preventing leaks in ductile iron and/or rubber gasketed joints. For use on ductile iron and cast iron pipe.

**PRESSURE RATING:** 150 psi.



416 BELL JOINT LEAK CLAMP



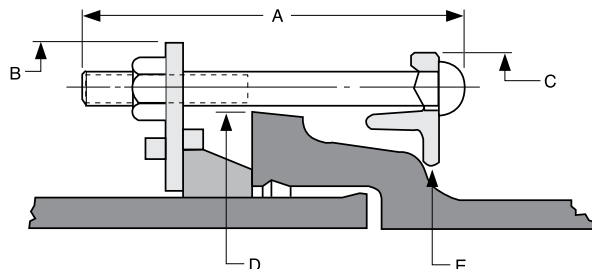
NSF61 certified upon request.

## BELL JOINT CLAMP (for use on Ductile Iron Pipe)

PIPE O.D.	CATALOG NUMBER	BOLTS NO: DIA. x LGTH A	SPIGOT RING O.D. B	BELL RING O.D. C	MAX. RING O.D. D	BELL RING I.D. E	LIST PRICE	APPROX. WEIGHT (lbs.)
13.20	416 - 13.20	6: 5/8" x 11.5"	18.94	18.68	16.43	14.46	\$2,938.66	89 #
15.30	416 - 15.30	8: 5/8" x 11.5"	21.04	20.78	18.53	16.56	3,124.05	104 #
17.40	416 - 17.40	8: 5/8" x 11.5"	23.16	22.90	20.65	18.68	3,191.25	114 #
19.50	416 - 19.50	10: 5/8" x 11.5"	25.42	25.54	22.91	20.80	3,320.07	127 #
21.60	416 - 21.60	10: 5/8" x 11.5"	27.65	27.77	25.14	23.03	3,647.50	145 #
25.80	416 - 25.80	12: 5/8" x 11.5"	32.03	32.15	29.52	27.41	3,853.41	170 #

## BELL JOINT CLAMP (for use on Cast Iron Pipe)

13.50	416 - 13.50	6: 5/8" x 11.5"	20.29	20.03	17.78	15.81	\$2,972.39	93 #
15.65	416 - 15.65	8: 5/8" x 11.5"	22.64	22.38	20.13	18.16	3,148.56	109 #
17.80	416 - 17.80	8: 5/8" x 11.5"	25.33	25.45	22.82	20.71	3,232.85	120 #
19.92	416 - 19.92	10: 5/8" x 11.5"	27.85	27.97	25.34	23.23	3,353.25	135 #
22.06	416 - 22.06	10: 5/8" x 11.5"	30.39	30.51	27.88	25.77	3,726.29	158 #
26.32	416 - 26.32	12: 5/8" x 11.5"	35.05	35.17	32.54	30.43	3,941.31	185 #



**TO ORDER:** Specify catalog number. For sizes not shown above, indicate Style 418 and specify Pipe OD, Bell OD, Bell Length, the gap between the Pipe OD and Bell ID, and maximum pressure rating. POA.